

CACTUS COURIER

Newsletter of the Palomar Cactus and Succulent Society

Volume 57, Number 12

December 2011

The Meeting is the * * **third** * * Saturday

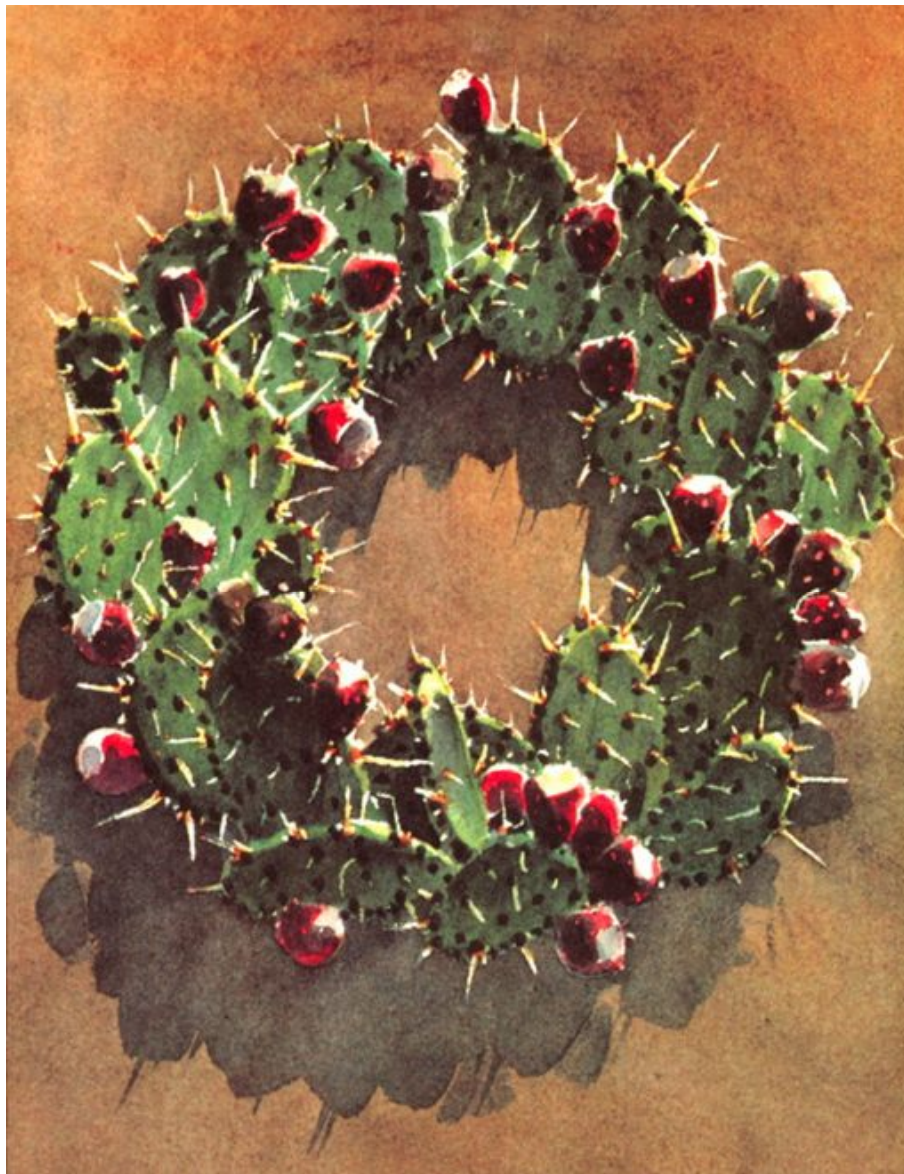


December 17, 2011



Joslyn Senior Center, 724 N. Broadway, Escondido

11:30 am



"Cactus Wreath" by Brad Braune – reprinted by permission of the artist

We Will Eat About 12:30 pm. Come Early and Help Set Up.

No Board Meeting • No Brag Plants • No Plant Sales • No Plant Exchange

❄️ *Holiday Party* ❄️
❄️ *2011* ❄️



Eleanore Hewitt will be coordinating the party this year (she'd be happy to pass the torch if anyone wants it!). If you have any questions, suggestions, offers of help or tranquilizers, please feel free to give her a call at home [REDACTED]. If you didn't sign up and wish to bring something, just give her a call.

As is traditional, the Club will be providing the main entrees of turkey and maybe ham. Plates, cups and cutlery will also be provided.

Now that the Senior Center has virtually no appliances, we are in need of coolers for both the cold and hot stuff. One of Eleanore's friends showed her a trick with foil-wrapped bricks heated in the oven – they keep food hot for hours! Any hot trays you may have tucked away in your back cupboards will be much appreciated as well. Don't forget the cords!

The set-up crew should arrive ready to work by **11:00 am**. There are tables to set and decorate, and the room could use some holiday cheer. We would appreciate people bringing cut greens or Christmas decorations so we can make the hall as festive as possible. Pine, juniper or pyracantha would be great – as well as any succulent material you think would fit into the seasonal theme – like Jade if it's in bloom. Please bring them early enough to be used in the decorating.

We welcome the spouses or SOs of all our members to the party. I know we would be delighted to meet them.

* * * * *

**PLEASE – remember to put your name on ALL serving utensils and dishes.
We would hate to have anything get lost in the clean-up shuffle.**

HOLIDAY PARTY

Sign-Up Sheet

CRANBERRY or RELISH DISHES

- 1) Mike Regan
- 2)
- 3)
- 4)
- 5)



VEGETABLES

- 1) Libbi Salvo
- 2) Francis Granger – *Baked Beans*
- 3) Florence Robbins
- 4)
- 5)
- 6)



DESSERTS

- 1) Vicki Broughton
- 2) Peter Walkowiak
- 3) Andrew Wilson
- 4) Teri Schmidt
- 5) Peggy Regan
- 6)
- 7)
- 8)



POTATOES, SWEET POTATOES, or STUFFING

- 1) Kathie Hoxsie – *Mashed Potatoes*
- 2) Eleanore Hewitt – *Stuffing*
- 3) Chris Barkley
- 4) Gloria Medina
- 5)
- 6)



SET-UP CREW

- 1) Eleanore Hewitt
- 2) Jean O'Daniel
- 3) Gloria Medina
- 4) Peter Walkowiak
- 5)
- 6)



SALADS

- 1) Phyllis Flechsig
- 2) Jean O'Daniel – *Fruit Salad*
- 3)
- 4)
- 5)
- 6)

SERVING CREW

- 1) Eleanore Hewitt
- 2) Vicki Broughton
- 3)
- 4)
- 5)
- 6)

ROLLS/BREAD

- 1) Beverly Ficuciello
- 2) Don Nelson
- 3)
- 4)
- 5)
- 6)



CLEAN-UP CREW

- 1) Eleanore Hewitt
- 2) Jean O'Daniel
- 3) Libbi Salvo
- 4) Peter Walkowiak
- 5)
- 6) **ALL OF US!**



We didn't have a lot of sign-ups in November. I sure could use some help with the food! I have plenty of turkey, there's potatoes and gravy in the works, and I think some extra stuffing this year.

But we definitely need lots of the goodies that make the holiday meal so special.

Drop me a phone call or an email if you'd like to bring something but couldn't sign up in advance.

– Eleanore

November Brag Plants

Cactus

1st *Mammillaria plumosa*
Phyllis Flechsig



Succulents

1st *Oxalis hirta*
Andrew Wilson
2nd *Oxalis massoniana*
Andrew Wilson



2012 Calendars from Jeff Moore of **Solana Succulents** are still available. The photography is wonderful!



..this is an example of his photography, not the actual calendar.



Palomar Cactus & Succulent Society

P.O. Box 840, Escondido, CA 92033
Membership Application

I/We wish to join/renew membership in the
Palomar Cactus & Succulent Society

\$25.00 Single Membership
\$30.00 Dual Membership (Same Address)
(1/2 price after June 30th)

There is a **\$5 discount** on the fees if you choose to receive your newsletter by email-only. Save money, leave a small carbon foot print, and reduce Eleanore's workload!

Please print! We have to be able to read it!

Email _____

Name _____ Phone _____

Address _____

City _____ State _____ Zip _____

Make checks payable to:
"Palomar Cactus & Succulent Society"
P.O. Box 840, Escondido, CA 92033



PEANUTS By Charles M. Schulz



Officers • Palomar Cactus & Succulent Society

Peter Walkowiak – President

Chris Barkley – Vice-President

Libbi Salvo – Secretary

Vicki Broughton – Treasurer

Ron Chisum – Program Chair

Dick Henderson – Board Member & Garden Chair

Bruce Barry – Board Member & Exchange Table

Don Nelson – Board Member

John Barkley – Board Member & Refreshments

Francis Granger – Board Member & Exchange Table

Stan Yalof – Board Member

Katy Cain – Refreshments

Brita Miller – Librarian

Dennis Miller – Raffle & Plant Sales & Membership Co-Chair

Eleanore Hewitt – Newsletter & Membership Co-Chair



Huntington's Gardens Suffer from Windstorm – Cleanup Under Way

Dec. 5, 2011

The severe windstorm that tore through the Pasadena area on Nov. 30 took out a number of trees at The Huntington Library, Art Collections, and Botanical Gardens. While all buildings were left virtually unscathed, and garden statuary sustained only minor damage, the botanical gardens themselves bore the brunt of the storm: preliminary estimates suggest that at least ~~50~~ 100 trees were either knocked down or will have to be removed because of substantial injury.



The storm left tremendous amounts of debris in its wake; work continues to clear pathways, and additional assessments of damage are under way. A number of specimen trees were lost, including some of the institution's signature oaks and pines.

Huntington Communications Coordinator Lisa Blackburn reported: "Some very old and very important specimens are down. The tall Italian stone pine that stood at the base of the subtropical garden fell, as did a large deodar near the north entrance of the Chinese garden, temporarily blocking the adjacent road. A number of trees were so damaged they will have to be removed; preliminary estimates suggest as many as 100 in all."

For safety reasons, some areas of the gardens will remain closed for a period of time. Most of the more popular garden areas are open, including the Desert Garden, Rose Garden, Chinese Garden, Children's Garden, and The Rose Hills Foundation Conservatory for Botanical Science. (The Zen Garden and Bonsai Court, which had remained open during Japanese Garden renovation, are now closed to visitor access until the reopening of that garden in April. Neither area experienced damage; however, the adjacent pathways are obstructed by debris and fallen bamboo.)

The Huntington lost power and was using back-up generators to conduct basic operations; as a result, it closed to the public and staff for three days in the storm's immediate aftermath. It reopened Sunday, Dec. 4, in time for a visit from Santa.



LA County Arboretum is closed until further notice

Dec. 05, 2011

The Arboretum Tree Fund, the single largest tree planting campaign in the Arboretum's history, is needed to replace the hundreds of trees and shrubs damaged by the December 1st windstorm, the worst in decades. At a time of great loss of our favorite specimens and places, we look to the future and will soon begin planting a new generation of Arboretum trees. A task requiring several years, these essential plantings will ensure a magnificent public resource for years to come. Please help the acquisition of new trees and shrubs by making a GIFT ONLINE, or by mail to Los Angeles Arboretum Foundation, 301 North Baldwin Ave, Arcadia, and CA. 91007. To make a donation by phone, please call Brittany Fabeck in our Development Office at 626.821-3237. Please include "Tree Fund" on your donation.



The lovely painting on the front page has been reprinted with the kind permission of the artist, **Brad Braune**. You can see more of his work at:

<http://www.bradbraune.com/>

As you wander through the website, please check out the many excellent paintings and prints offered there. I know I have my eye on several of them!

Palomar Cactus • 2012

January

S	M	T	W	T	F	S
1	2	3	4	5	6	7
8	9	10	11	12	13	14
15	16	17	18	19	20	21
22	23	24	25	26	27	28
29	30	31				

February

S	M	T	W	T	F	S
			1	2	3	4
5	6	7	8	9	10	11
12	13	14	15	16	17	18
19	20	21	22	23	24	25
26	27	28	29			

March

S	M	T	W	T	F	S
				1	2	3
4	5	6	7	8	9	10
11	12	13	14	15	16	17
18	19	20	21	22	23	24
25	26	27	28	29	30	31

April

S	M	T	W	T	F	S
1	2	3	4	5	6	7
8	9	10	11	12	13	14
15	16	17	18	19	20	21
22	23	24	25	26	27	28
29	30					

May

S	M	T	W	T	F	S
		1	2	3	4	5
6	7	8	9	10	11	12
13	14	15	16	17	18	19
20	21	22	23	24	25	26
27	28	29	30	31		

June

S	M	T	W	T	F	S
					1	2
3	4	5	6	7	8	9
10	11	12	13	14	15	16
17	18	19	20	21	22	23
24	25	26	27	28	29	30

July

S	M	T	W	T	F	S
1	2	3	4	5	6	7
8	9	10	11	12	13	14
15	16	17	18	19	20	21
22	23	24	25	26	27	28
29	30	31				

August

S	M	T	W	T	F	S
			1	2	3	4
5	6	7	8	9	10	11
12	13	14	15	16	17	18
19	20	21	22	23	24	25
26	27	28	29	30	31	

September

S	M	T	W	T	F	S
						1
2	3	4	5	6	7	8
9	10	11	12	13	14	15
16	17	18	19	20	21	22
23	24	25	26	27	28	29
30						

October

S	M	T	W	T	F	S
	1	2	3	4	5	6
7	8	9	10	11	12	13
14	15	16	17	18	19	20
21	22	23	24	25	26	27
28	29	30	31			

November

S	M	T	W	T	F	S
				1	2	3
4	5	6	7	8	9	10
11	12	13	14	15	16	17
18	19	20	21	22	23	24
25	26	27	28	29	30	

December

S	M	T	W	T	F	S
						1
2	3	4	5	6	7	8
9	10	11	12	13	14	15
16	17	18	19	20	21	22
23	24	25	26	27	28	29
30	31					

