

CACTUS COURIER

Newsletter of the Palomar Cactus and Succulent Society

Volume 59, Number 5

May 2013



The Meeting is the **3rd** Saturday!

May 18, 2013



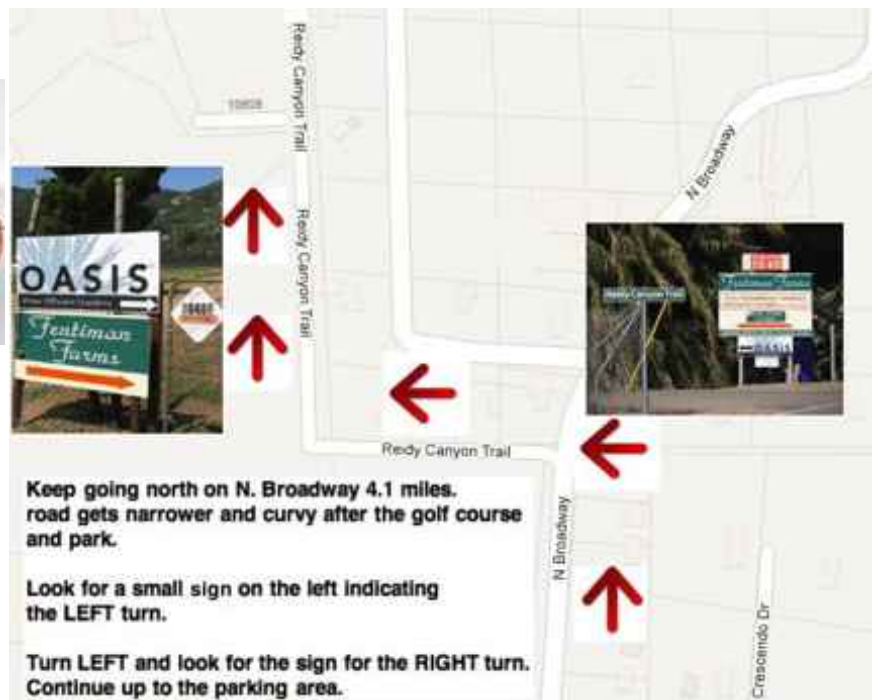
We will be meeting at OASIS NURSERY.

This is a wonderful nursery at the north end of Escondido off N. Broadway
(yes, that IS the same road the center is on!)



OASIS WATER EFFICIENT GARDENS

10816 Reidy Canyon Trail
Escondido, CA (760) 277-0214



Keep going north on N. Broadway 4.1 miles.
road gets narrower and curvy after the golf course
and park.

Look for a small sign on the left indicating
the LEFT turn.

Turn LEFT and look for the sign for the RIGHT turn.
Continue up to the parking area.



**Check-in starts
~ 11:45 am**

The Club is offering all **paid-up members** a one-gallon dish garden in a simple plastic pot. You can purchase additional plants – soil to be provided. Get help from Oasis staff or Club members to plant your own larger container gardens. Bring your own pots – the nursery is running out as we speak!

But more important than the pots will be a talk by **Dr. Lucia Villavicencio**, the head researcher of Altman’s *Center for Applied Horticultural Research*. There are many more pests than there used to be, and we will be getting some cutting-edge information on what works, and what doesn’t.



**“Cacti and Succulents:
A Research Approach to Common Issues”**
•• Lucia Villavicencio ••

Cacti and succulent species are becoming more popular. With water cost increasing, these beautiful plants can save you money, time, and even offer health benefits, while providing years of enjoyment. While these plants are relatively easy to growth and resistant to most pests, there are some particular pests, such as Aloe mite, that are very difficult to control. New studies offer insights on how to control some of these pests. Join us for a slide presentation discussing cultivation and pest control for cacti and succulents. We will talk, among other things, about the effect of soil pH, Aloe mite, Agave weevil, and Aloe aphid control. You will have the opportunity to see pictures and real life examples of some of the problems we will be discussing.

She has a bachelor’s degree in agronomic engineering from Zulia State University, Venezuela; a master’s degree in horticulture, and a PhD in plant physiology from North Carolina State University. Before working at the Center for Applied Horticultural Research (CfAHR), she taught for three years in the Agronomy program at Zulia State University. In her current position, Lucia is responsible for conducting research in all areas of ornamental plant production. She has worked with disease and insect prevention and control, plant growth regulators, and water use efficiency. She works with a wide variety of plant species, including annuals, woody ornamentals, vegetables, cacti, and succulents. Her work has been published in trade and scientific journals.

Lucia Villavicencio is the executive director of the Center for Applied Horticultural Research in Vista.



REFRESHMENTS

Your Friendly Editor didn’t get a list of people bringing refreshments, so if you signed up, we really do want goodies!

**There will be coffee and punch, but we won’t have the usual kitchen supplies.
All treats should be pre-cut and ready to go.**



Brag Plants – April

Andrew Wilson and Ron Chisum identified the three plants brought in April. Because there were no slips for people to fill out, we don’t have the names of the owners. We’ll be happy to update that info next month.



- 1st *Echinocactus platyacanthus*
- 2nd *Echinocereus pensilis*
- 3rd *Cleistocactus (formerly Borzicactus) ferreri*

PRESIDENT'S MESSAGE • • MAY 2013

Hope you all enjoyed the last meeting, wish I could of been there. This is a busy time of year with many events, shows and sales most every weekend. The San Diego Show and Sale is the 1st and 2nd of June, with an auction on Sunday afternoon at 2pm. If you would like to provide plants for the auction there will be a table for them in the show room, proceeds will benefit the Anza Borrego Foundation. This is followed by the Succulent Celebration being held at the Water Wise Botanicals in Bonsal the next weekend. I will be at the Gates CSS Show and Sale on the 17th and 18 of this month being held at the Jarupa Cultural Center in Riverside.

Go to these shows, bring friends, these shows are our best way to share in our passions over succulent plants and to support other clubs. It is amazing the diversity of succulent plants you find at these shows, far greater than you would see at a nursery. Don't forget that we are doing two bus trips to of the largest shows this summer. If you have never been to these two shows, CSSA at the Huntington June 29th and the Inter-City Show on August 17th, then you are in for a real treat. You can send me an email to sign up. Happy Growing.

Peter Walkowiak
President

2013 MEETING SCHEDULE

18 May Oasis Water Efficient Gardens

NOTE !!! 3rd Saturday !!

22 June Park Ave Community Center

27 July Park Ave Community Center

24 August to be determined

28 September Park Ave Community Center

26 October San Diego Botanic Garden (*Quail*)

23 November Park Ave Community Center

21 December Park Ave Community Center

NOTE !!! 3rd Saturday !!



Officers • Palomar Cactus & Succulent Society

Peter Walkowiak – President

Chris Barkley – Vice-President

Libbi Salvo – Secretary

Vicki Broughton – Treasurer

Dick Henderson – Board Member & Garden Chair

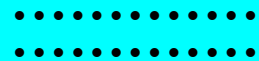
Bruce Barry – Board Member & Exchange Table

Don Nelson – Board Member

John Barkley – Board Member & Refreshments

Francis Granger – Board Member & Exchange Table

Stan Yalof – Board Member



Ron Chisum – Program Chair

Brita Miller – Librarian

Vicki Martin – Assistant Librarian

Dennis Miller – Raffle & Plant Sales & Membership Co-Chair

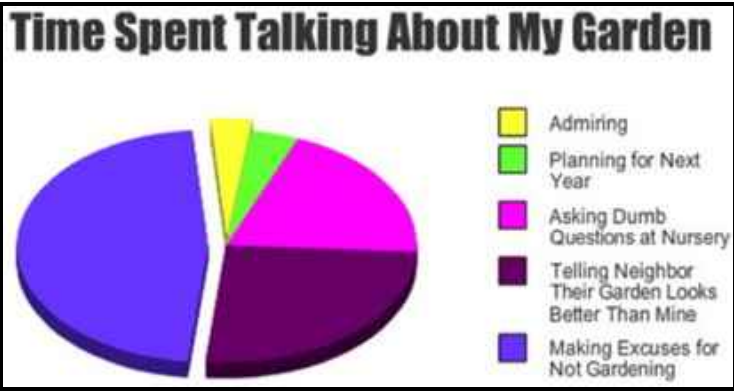
Eleanore Hewitt – Newsletter & Membership Co-Chair



SUMMER BUS TRIPS

We are planning two bus trips this summer, the **Cactus and Succulent Society of America (CSSA) Show and Sale** at the Huntington Gardens on Saturday, June 29th and the **Intercity Show and Sale** at the Los Angeles Arboretum, the largest show of its kind on Saturday, August 17th.

Details are not yet finalized, but both trips are on Saturdays and we will leave early in the morning. There will be signup sheets at the next meetings; or send Peter an email to reserve your spot. We will be doing this in conjunction with the San Diego Club.



Palomar Cactus & Succulent Society

P.O. Box 840, Escondido, CA 92033
Membership Application
 I/We wish to join/renew membership in the
Palomar Cactus & Succulent Society

\$25.00 Single Membership
\$30.00 Dual Membership (Same Address)
 (1/2 price after June 30th)

There is a **\$5 discount** on the fees if you choose to receive your newsletter by email-only. Save money, leave a small carbon footprint, and reduce Eleanore's workload!

Please print! We have to be able to read it!

Email _____

Name _____ Phone _____

Address _____

City _____ State _____ Zip _____

Make checks payable to:
 "Palomar Cactus & Succulent Society"
 P.O. Box 840, Escondido, CA 92033

•• 2013 ••

Southern California Events

May 12
 San Diego Epiphyllum Society
 44th Annual Mother's Day Show & Sale
 Casa del Prado Room 101, Balboa Park, San Diego
www.sandiegoepi.com

May 17 & 18
 Gates Cactus and Succulent Society 32nd Show and Sale
 Jurupa Mountains Cultural Center, 7621 Granite Hill Dr, Riverside 92509
www.gatescss.org

June 1 & 2
 San Diego Cactus & Succulent Society Show & Sale
 Casa del Prado, Balboa Park, San Diego
www.sdcss.net

June 8
 San Diego Bromeliad Society Show and Sale
 Casa del Prado, Balboa Park, San Diego
www.bsi.org/webpages/san_diego.html

June 8 & 9
 Los Angeles Cactus & Succulent Society Show & Sale
 Sepulveda Garden Center, 16633 Magnolia Blvd, Encino
LACSS.Contact@gmail.com
www.lacss.com

June 28-30
 CSSA Annual Show and Sale
 Huntington Botanical Gardens
 1151 Oxford Road, San Marino, CA 626-405-2160 or 2277

July 26-28
 Orange County Cactus & Succulent Society Summer Show and Sale. Friday & Saturday, 9am to 5pm, Sunday the 28th 12-4pm. Anaheim United Methodist Church, 1000 S. State College Blvd, Anaheim 92806 Info 562-587-3357
www.occss.org



Herbicide Toxicity on Cactus and Succulents

Last year we conducted a trial for the IR-4 Project testing several herbicides at different rates for their phytotoxicity on cactus and succulent plants. The IR-4 Project develops research to support registration or to amend labeled product uses to include specialty crops such as ornamental plants. You can find information about this program at their website <http://ir4.rutgers.edu/>. We tested several commercial products on five succulent and cactus species (Table 1).

Table 1. Commercial herbicides, rates and plant species tested

PRODUCT	RATES	PLANT SPECIES
Echelon 4SC	12, 24, 48 fl oz	<i>Echeverria 'imbricata'</i> , <i>Crassula ovata</i> , <i>Echinocactus grusonii</i> , <i>Aloe 'Blue Elf'</i> , <i>Agave 'Blue Flame'</i>
Tower EC	21, 42, 84 fl oz	
Freehand G	150, 300, 600 lb	<i>Aloe 'Blue Elf'</i> , <i>Agave 'Blue Flame'</i>
Indaziflam G	200, 400, 800 lb	
Snapshot TG	200, 400, 600 lb	
Gallery 75DF	2.6 lb	<i>Echeverria 'imbricata'</i> , <i>Crassula ovata</i> , <i>Echinocactus grusonii</i>

The products were applied twice at a 6-week interval. Phytotoxicity was measured as chlorosis, necrosis, discoloration, spotting and stunting recorded on a scale of 0 to 10 (0= no phytotoxicity, 10= completely chlorotic, necrotic or dead, discolored, spotted or extremely stunted) at 1, 2 and 4 weeks after each treatment application. Growth index, plant height and diameter were also measured. We found that the effect of the herbicides varied with plant species. *Crassula ovata* had slight chlorosis and necrosis 1 week after treatment (WAT) with all materials and at all rates studied; however, the plants recovered between 2 to 4 WAT, with the exception of those plants treated with Echelon and Tower at 4X the label rate, which had significant necrosis. Tower also caused stunting at all rates of application.



Crassula ovata leaves with symptoms of necrosis (left) and stunting (right) caused by Tower at 4X the label rate.

Echeverria 'imbricata' treated with Echelon and Gallery had slight but significantly higher necrosis than the control. Tower caused severe necrosis and stunting of the plants. Gallery induced a change in growth habit, with rosettes growing more open and less compact than what is normally seen in this plant. *Echinocactus grusonii* was less sensitive to the herbicides studied; however, Tower at 4X the label rate caused stunting. *Agave 'Blue Elf'* was very sensitive to the herbicides studied and all treatments caused some phytotoxicity. Indaziflam caused significant chlorosis and necrosis. Echelon at all rates and Freehand, Snapshot, and Tower at rates higher than 1X the label rate caused necrosis. An interesting effect was seen with Snapshot; plants treated at 2X and 4X the label rate were significantly larger than the

control. *Aloe 'Blue Elf'* did not show phytotoxicity symptoms after herbicide application.



Growth habit of Gallery-treated *Echeverria* (right) compared to the control (left)



Echeverria stunting caused by Tower at 4X the label rate



Agave 'Blue Flame' chlorosis (left) caused by Indaziflam and spotting (right) caused by Snapshot.



Control (left) and 2X label rate Snapshot-treated *Agave 'Blue Flame'*



P.O. Box 968 - Bonsall, CA 92003 PHONE (760) 728-2641 FAX (760) 451-0265 www.waterwisebotanicals.com

<http://succulentcelebration.com/>

More information: [Jamie Higgins](#), Waterwise Botanicals, 760/728-2641
[Debra Lee Baldwin](#), 760/749-6272



SUCCULENT CELEBRATION AT WATERWISE BOTANICALS JUNE 7-8

North San Diego County's [Waterwise Botanicals](#) nursery will host a two-day Succulent Celebration on Friday and Saturday, June 7-8, 2013.

The first of its kind in southern CA, the event celebrates the beauty of succulent plants in low-water, easy-care landscapes, garden vignettes and container compositions. The event also celebrates and launches Debra Lee Baldwin's new book, [Succulents Simplified: Growing, Designing and Crafting with 100 Easy-Care Varieties](#) (Timber Press).

The stellar lineup of speakers includes garden photojournalist and bestselling author [Debra Lee Baldwin](#); plant explorer and hybridizer Kelly Griffin of [Altman Plants](#); and nurserymen/garden designers Tiger Palafox of [Mission Hills Nursery](#), Jeff Moore of [Solana Succulents](#), Michael Buckner of The Plant Man Nursery, and Tom Jesch of [Waterwise Botanicals](#).

Additional highlights include tours of beautiful, low-water gardens; potting demonstrations and workshops; a huge assortment of succulents and low-water plants for sale; experts on hand to answer landscape design and plant-care questions; 20 acres of nursery and display gardens to explore; and vendors offering succulent-themed gifts, container gardens and more.

Hours: 8:00am to 6:00pm both days. Free parking and admission.

RSVP required to talkplants@waterwisebotanicals.com or call (760) 728-2641.

Location: Waterwise Botanicals nursery (*formerly Daylily Hill*), just off Interstate 15 northwest of the Highway 395 exit (midway between Escondido and Temecula), at 32183 Old Highway 395, Escondido, CA.

Photos: Access our [online library](#) of captioned, downloadable high-res images.



2013 Cactus and Succulent Show and Sale

Presented by

The San Diego Cactus and Succulent Society

June 1st & 2nd

At Balboa Park in

The Casa Del Prado

Show: Room 101, Saturday, June 1st 10 to 3, Sunday, June 2nd 10 to 4

**Sale: Courtyard, Saturday, June 1st 10 to 5, Sunday, June 2nd 10 to 4
SDCSS Members-only shopping Saturday, June 1st, 9am to 10am**



Strange and exotic plants from the far corners of the world gathered together for your viewing amazement!!

Courtyard sale of choice specimen plants for the novice and collector as well as handmade stoneware planters and pots!!

Potting service will be available along with cultural information.



**See a great selection of “water wise” plants for landscaping.
For additional information visit: www.sdcss.net**

If you have trouble finding a parking spot, use the **Balboa Park TRAM**. The free tram provides access to Balboa Park’s museums and attractions. You can park in the Inspiration Point lot and wait at Tram Central, a shady arbor with benches. The tram will deliver you to the heart of Balboa Park. Trams pick up every 8 to 10 minutes. Riders may also board at one of the designated pick-up areas around the Park. The tram operates seven days a week from 8:30 am to 6:00 pm.