

# CACTUS COURIER

*Newsletter of the Palomar Cactus and Succulent Society*

The North San Diego County Cactus and Succulent Society

**Volume 64, Number 7**

**July 2018**

## NEXT MEETING

**Saturday, July 28th**

**Park Ave. Community Center  
210 Park Ave., Escondido**

Brag plants, Exchange Table or Benefit Drawing

**11:00am – 3:00pm**

## REFRESHMENTS

- Our Refreshment Table has been a bit scarce of goodies lately. Thanks to those who bring food monthly but don't sign up!

- And HUGE thanks go to Jon Gerome for bringing in three different salads, bread, etc. for us to feast on last month!

Otherwise it would have been slim pickings!

- 1 – Dawn Pleasant
- 2 – Vivian Folmer
- 3 – Ginny March
- 4 – Gloria Medina
- 5 – Charlene Barad
- 6 – Anna Devine
- 7 – Jerre Stafford

**SO, TAG! IT'S YOUR TURN!**

## In This Issue

Speaker Information	p. 1-2
Notices	p. 3
Picnic & Auction Info	p. 3
Education Section	p. 4
Brag Table & Garden Brag Points	p. 4
News From the Safari Park Gardens	p. 5
Do You Have a Favorite Nursery?	P. 5
Brag Table Winners	p. 6
Garden Brag Photos	p. 7 - 8
Erik & Irina's Coffee in the Garden Info	p. 9
Misc. Club Info, 2018 Club Calendar	p. 10

Contact [info@palomarcactus.org](mailto:info@palomarcactus.org) for general information.

Webpage is STILL under reconstruction!

[www.palomarcactus.org](http://www.palomarcactus.org)

We're on Facebook!

## This Month's Presentation:

**44 Years of Growing *Tillandsia*,  
the Lilac Fire, and Rainforest Flora**

**By Paul Isley**

Paul will spend a few minutes recapitulating and relating how he became interested in Tillandsias and how that evolved into the nation's largest nursery that specializes in this fascinating genus in the Bromeliad family.

Next, On December 7<sup>th</sup>, 2017 the Lilac Fire in North County San Diego destroyed Rainforest Flora's largest growing facility. Paul will talk about how it happened along with graphic photos that show how utterly destructive fire can be. Fortunately, and as a fascinating story in and of itself, many Tillandsias are incredibly resilient and the story and photos of what has transpired since the fire is almost miraculous.

Additionally, Paul will present eye-catching photos of some of the best Tillandsia hybrids that have been developed in recent years. It's the breath-taking beauty of so many Tillandsias in general, and many of the hybrids in particular, that have provided such a strong attraction and developed such a life-long passion for Paul over the years.

Paul will also discuss in detail how best to care for your Tilly Treasures, both indoors and out. There are simple "tricks of the trade" that will make your growing easier and more pleasurable.

Finally, he will show photos of their Torrance location that is replete with rockscape waterfalls and koi ponds – a destination for those who appreciate ornamental horticulture in an eye-opening setting.

At the end of the presentation, there will be a short Q&A to cover any of your areas of concern for all things Tillandsia.



**Paul T. Isley III** is a native Southern Californian who graduated from UCLA where he was first introduced to *Tillandsias* in the mid 1960s. Paul opened Genus Tillandsia in 1974 and two years later it evolved into Rainforest Flora, Inc. In 1976 Jerry Robinson joined Paul and together they built Rainforest Flora, Inc. into one of the world's premier Bromeliad nurseries.

They have also introduced numerous exquisite bromeliad and *Tillandsia* species, cultivars, and hybrids to the marketplace. They were thrilled to learn how much *Tillandsia* hybrids exhibit great vigor, growing much larger with correspondingly larger blooms than either parent. Rainforest Flora distributes their "home-grown" bromeliads and staghorn ferns to chain stores, nurseries and botanical gardens around the U.S. and the world. Public demand for *Tillandsia* is increasing significantly and the plants are becoming especially popular in Asia. Also, tillandsias are being used more and more by cutting-edge interior landscapers and florists who are looking for special, modern-looking plants that are easy to maintain.



Paul published the book *Tillandsia* in 1987 and this large-format coffee table book has since become a collector's item. In 2010, he came out with *Tillandsia II* that, among other things, has a new chapter devoted to Tillandsia hybrids.

Over the past 40 years, with the exception of Australia, Paul has lectured in every bromeliad friendly country in Asia, Europe, and Latin America, in addition to the US.

- **Paul will be bringing a cornucopia of mostly nursery grown, not-so-common tillandsias for members to purchase. We are setting up 18 feet of table space, so he has room for a great selection for you to select from. He will be ready to sell at 11am and of course the best will go first.**
- **Since Tillandsias are not in pots he asks that you bring bags or boxes for your purchases if possible. The club will have some bags.**
- **Also, cash or checks are preferred (no tax), although credit cards will be accepted – it just takes a bit longer.**

**Editor's Note:** Out of curiosity I Googled "Tillandsia Dish Gardens" and wow! So, I just couldn't help myself from sharing some that struck my fancy. Enjoy!





# ~ Notices ~

## **BRAG PLANTS – PLAIN OLE PLASTIC POTS ARE OKAY THIS MONTH!**

July is the second month of each year that your Brag Plants may be shown in plastic grower pots without being dinged for lack of staging. However, the pots need to be clean, dry, no weeds, etc., so that the plants look as attractive as possible. They should also be show type plants, just in plastic vs. ceramic pots.

## **THANKS SO MUCH TO TAMMY HARDON AND RUSSEL RAY**

Tammy and Russel have volunteered to Co-Chair the Del Mar Fair exhibit with Annie Morgan in 2019. We have already started discussing improvements and are looking forward to an even better exhibit next year!

## **BACKUP PEOPLE WANTED**

Brita is in need of members to be backups when those who do regular volunteers jobs can't make it. This would be on an on-call basis. Contact Brita if you can help out with this.

## **LIKE DISCOUNTS?**

Are you aware that most nurseries will give you a 10% discount for being a member of a garden club, including PCSS. You need to politely ask, show your club badge, or a Membership Card (which we'll have available at the next meeting), and most nurseries are happy to give this discount.

Additionally, San Diego Botanic (Quail) Garden gives a 10% discount on entry, membership, and at their gift shop!

## **EDUCATION SECTION NOTICE**

The Education Section is on hold after this month while Annie finishes reconstruction of the website and catches up on a few other club projects. In the meantime, do send ideas, articles, etc. for the future.

**CONGRATULATIONS** to David Buffington who has moved up to the Intermediate level! And also, to those newer members who have jumped right in bringing plants to the Brag Table and sending photos for the Garden Brag page.

## **PICNIC & AUCTION – Sat. August 25<sup>th</sup>**

Our annual picnic potluck and auction is coming up so it's time to briefly review the details. The event will again be at the San Diego Botanic (Quail) Gardens in the Ecke Building where we had last year's picnic and our October Show and Sale.

### **PICNIC -**

- We will again be passing around the potluck sign-up sheet at this month's meeting. If you will miss this meeting, please contact to sign up, or if you have any questions.
- We do need to know what dish you are going to bring so we know what we have and don't end up with three people bringing baked beans!

### **AUCTION**

As you hopefully know, each year we hold an auction to raise money to donate to the San Diego Botanic Garden and this year we are hoping it will be even better than last year where we raised \$1028.40! An auction is a great way to add to your collection - bring a plant to be auctioned (donating part or all of the proceeds to the garden), then bid and take home a nice plant for yourself.

- You may also bring in other garden related items – artwork, tools, pottery, etc.
- You may donate the entire proceeds or do a 70/30% split with 70% to you and 30% to the garden.
- We still want those beautiful show-type plants in nicer pots; they are an excellent way to enhance one's collection.
- And, once again this year we are also happily accepting quality plants in plastic pots, not so fancy looking but still great plants in clean pots, etc.
- Or perhaps you make beautiful dish gardens and would like to create one to donate. They should be of gift-giving quality.
- All auction plants, including the pots, must be bug free, manicured, and in clean pots, etc. They should be labeled, and be something desirable, maybe unusual, that you might buy at a nice nursery and be willing to spend say \$15 and above.
- **This year we are starting something new. In addition to a regular auction, we will also have a silent auction for plants/items that are initially valued at \$10 or less. These may be smaller show plants, landscape plants, etc. They should also be in good condition, something you'd buy to plant in your yard or grow to be a show plant in time.**



◆ Contact Annie with Auction questions.

◆ Also, please, please, please send her photos of your donations for the August Newsletter.

~ TAKE SOME TIME NOW TO CHOOSE YOUR AUCTION PLANTS / ITEMS AND START GETTING THEM READY! ~

## Education Section by Annie Morgan

**# 1 - If you haven't heard about the huge theft (thousands!) of Dudleyas from their habitat in Northern California a few months ago here is a link to an article about what happened.**

~ <https://www.mnn.com/earth-matters/wilderness-resources/blogs/succulent-smuggling-ring-northern-california-dudleya-farinosa>

**# 2 – Here is a link to an article titled “Consider the Cactus: How Succulents Took Over Instagram and Then the World” that Stan Yalof passed on to share. I was there the first year and over 1000 people had arrived by noon!**

~ <https://www.theringer.com/tech/2018/5/22/17374708/consider-the-cactus-how-succulents-took-over-instagram-and-then-the-world>

**# 3 – And for those of you who are REALLY into cactus, Ron Chisum sent me this link to a site where you can download copies of The Cactus Explorer, saying it is “very much about cactus with a few succulents thrown in”.**

~ [www.cactusexplorers.org.uk/journal1.htm](http://www.cactusexplorers.org.uk/journal1.htm)

My apologies to Ron and Stan for taking so long to pass these on to you.

## **BRAG TABLE & GARDEN BRAG PHOTOS POINTS**     **January - June 2018**

Hopefully listing the points will develop a little healthy competition, encourage more entries, and you will know where you stand. We will list them again in November.

Many clubs include this in their newsletters or websites, so we thought we would join the trend. So as not to embarrass anyone, if you have 5 or less total points we will not include your name, or at your request.

Starting this year, we will now be awarding 8" plants to the top 2 or 3 point earners, above 40 points, in each level at the December Holiday Party when we hand out gift plants. You must be in attendance to receive your gift plants.

Points for both categories (Brag Table & Garden Photos) and all levels (Novice, Intermediate, and Advanced) will be totaled and Gift Plants will be given out starting with the highest point winners.

<u><b>NOVICE</b></u>		<u><b>INTERMEDIATE</b></u>		<u><b>ADVANCED</b></u>		<u><b>Garden Brag Photos</b></u>	
Winston Chan	29	Neila Rybicki	82	John Barkley	122	Lorie Johansen	29
Vicky Martin	25	Brita Miller	66	Robert Kopfstein	53	Susan LaFreniere	24
Nell McChesney	25	Annie Morgan	51	Mike Nelson	48	Annie Morgan *	24
Patti Nelson	24	Russel Ray	38	Lorie Johansen	36	John Tashjian	20
Heather Chan	23	Libbi Salvo	28	Stan Yalof	16	David Buffington	17
Kathie Hoxie	23	Bill Diangelo	22	Ron Chisum	11	Marcy Singer	13
Nancy Dunn	21	May Fong Ho	20	Phyllis Flechsig	8	Robert Kopfstein	8
Chet Reed	20	Don Nelson	18			Rebecca Wooster	8
David Buffington	18	Kevin Smith	15			Mike Nelson	8
Sandy Wetzel Smith	17	Harold Dunn	13			Wanda Mallen	7
Julie Slater	16	Jim Anderson	12			Harold Dunn	4
Tammy Harmon	16	John Tashjian	8				
Jon Gerome	12	Steve Rybicki	8				
Moni Wailblinger	10						
Ginny March	6						

\*Since I, Annie, do the newsletter, I cut my Garden Brag points in half so there is no sense of unfairness.



# NEWS FROM THE SAFARI PARK GARDENS

By Dee Morgan

While the Old World Garden is still closed to the public (with an unknown opening date), people are visiting the Baja Garden in droves because of the new trail leading there from the Australia Walkabout exhibit. A huge thank you goes to Ric Newcomer, a long-time SDCSS member, who donated an excellent collection of mostly cactus, and Shirley Berrys, who also donated a large collection to the San Diego Zoo Safari Park. The donated plants look terrific where they are planted along the new trail to the Baja Garden.

As always, if you have plants or materials to donate, or if you would like to volunteer at the gardens, please contact May Fong Ho at [info@palomarcactus.org](mailto:info@palomarcactus.org).



**Photos:** Donated collections are being planted along the trail to the Baja Garden. Photos by May Fong Ho, used with permission of the San Diego Zoo Safari Park.



## DO YOU HAVE A FAVORITE NURSERY?

As part of the newly designed website we would like to include a list of nurseries in the area, or even those that are special but a bit of a drive, that have good selections of succulents, whether for landscaping or for show.

We're especially looking for those that carry unusual C & S plants.

If you have some favorites, please email their name and location to Annie at [secretary@palomarcactus.org](mailto:secretary@palomarcactus.org).



# BRAG TABLE WINNERS

## Brag Table Winners

### Intermediate Cactus

- |     |               |                           |     |
|-----|---------------|---------------------------|-----|
| 1st | Neila Rybicki | Echinocactus lobivia      | #1  |
| 2nd | Don Nelson    | Acanthocalycium Violaceum | # 5 |

### Advanced Cactus

- |     |              |                     |     |
|-----|--------------|---------------------|-----|
| 1st | John Barkley | Gymnocalycium       | # 3 |
| 2nd | John Barkley | Maihuenia poeppigii | # 4 |
| 3rd | Mike Nelson  | Trichocereus        | # 5 |

### Novice Succulent

- |     |                    |                       |     |
|-----|--------------------|-----------------------|-----|
| 1st | David Buffington   | Tylecodon paniculatus | # 6 |
| 2nd | Sandy Wetzel Smith | Aeonium crested       | # 7 |
| 3rd | Vicki Martin       | Haworthia pumila      |     |

### Intermediate Succulent

- |     |            |                       |     |
|-----|------------|-----------------------|-----|
| 1st | Russel Ray | Operculicarya decaryi | # 8 |
| 2nd | Don Nelson | Echeveria             |     |

### Advanced Succulent

- |     |                  |                                  |     |
|-----|------------------|----------------------------------|-----|
| 1st | Robert Kopfstein | Bursera                          |     |
| 2nd | Phyllis Flechsig | Gasteria batesiana x armstrongii |     |
| 3rd | John Barkley     | Calibanus hookeri                |     |
| 3rd | Robert Kopfstein | Huernia crested                  | # 9 |

### Dish Garden Novice

- |     |              |  |      |
|-----|--------------|--|------|
| 1st | Tammy Harmon |  | # 10 |
|-----|--------------|--|------|

### Dish Garden Advanced

- |     |              |  |  |
|-----|--------------|--|--|
| 1st | John Barkley |  |  |
|-----|--------------|--|--|

### Plant of the Month Novice

- |     |                  |                                |      |
|-----|------------------|--------------------------------|------|
| 1st | David Buffington | Euphorbia polygona 'Snowflake' | # 11 |
| 2nd | Patti Nelson     | Euphorbia inermis              | # 12 |
| 3rd | Nancy Dunn       | Euphorbia mammillaria          | # 13 |

### Plant of the Month Intermediate

- |     |             |                             |      |
|-----|-------------|-----------------------------|------|
| 1st | Russel Ray  | Euphorbia spiralis cristata | # 14 |
| 2nd | Kevin Smith | Euphorbia anoplia           | # 15 |
| 3rd | Russel Ray  | Euphorbia ferox             |      |

### Plant of the Month Advanced

- |     |                  |                           |      |
|-----|------------------|---------------------------|------|
| 1st | Robert Kopfstein | Euphorbia fasciculata     | # 16 |
| 2nd | Mike Nelson      | Euphorbia esculenta       |      |
| 2nd | Robert Kopfstein | Euphorbia antisiphilitica |      |
| 3rd | Phyllis Flechsig | Euphorbia decepta         |      |



#1



#10



#9



#12



#14



#4



#8



#7



#15



#11



#3



#16



#5



#13



#6



#2



# Garden Brag Plants

Share a section of your garden, a plant that bloomed in between meetings, or one that is too large or heavy to bring to the Brag Table. You will earn 1 brag point for emailing or texting photo(s), and 3 points for each one printed.

*Email photos, with plant names, to Annie. Be sure to include your name.*



Above: Russel Ray's *Tacinga inamoena* with its beautiful two-colored bloom.

Right: Susan & Leon LaFreniere's *Triochoocereus* which had over 25 blooms!

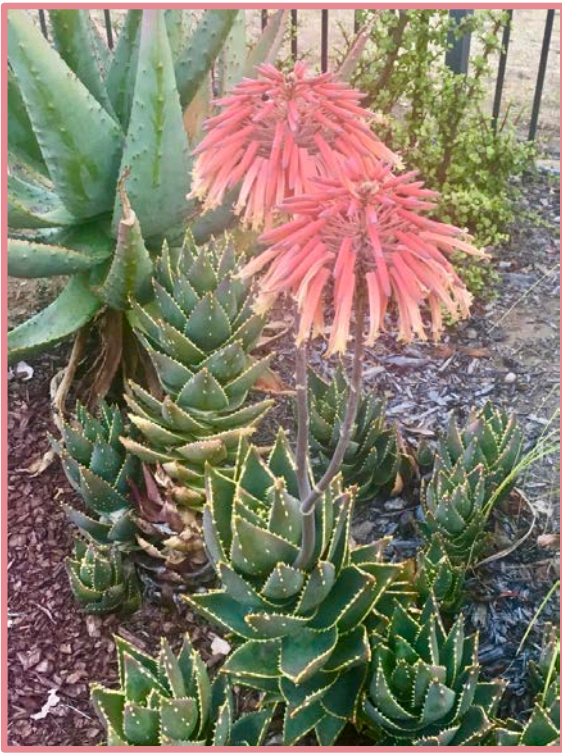


Above Left: Annie Morgan's cactus which has had more than 10 blooms over several months.

Right: Annie's *Lophophora williamsii* blooming for the second time.







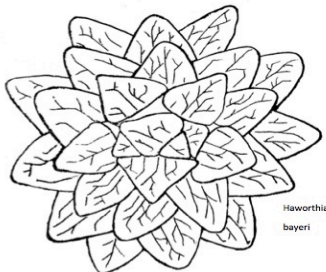
Above: Susan & Leon LaFreniere's *Aloe distans* in bloom.



Right: Russel Ray's *Tephrocactus articulatus* f. *inermis*, AKA 'Pine Cone Cactus', and a close up of its flower.



33<sup>rd</sup> Annual Inter-City  
**Cactus and Succulent Show  
and Sale**



*Haworthia  
bayeri*

August 11 - 12 2018 9 AM to 5 PM  
LA County Arboretum  
301 N Baldwin Arcadia  
[www.intercityshow.com](http://www.intercityshow.com)



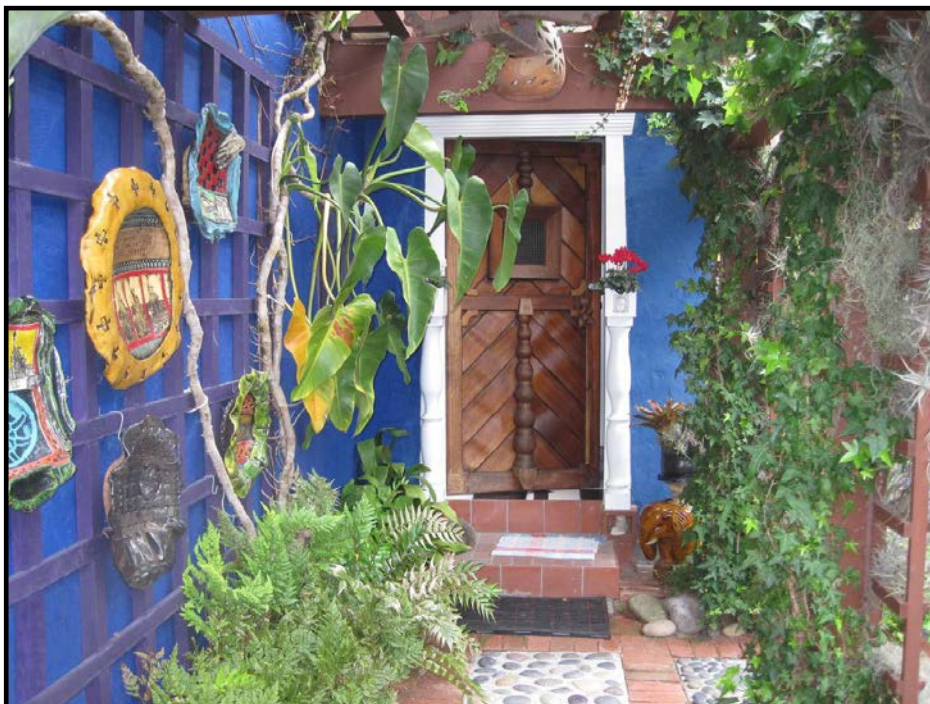
Annie Morgan's *Pachypodium lamerei*, which had 13 pairs of seed pods this year. Each single pod is up to 6" long.



# Erik & Irina Gronborgs' ~ Coffee in the Garden

Saturday, July 21, 10:00AM - 2:00PM

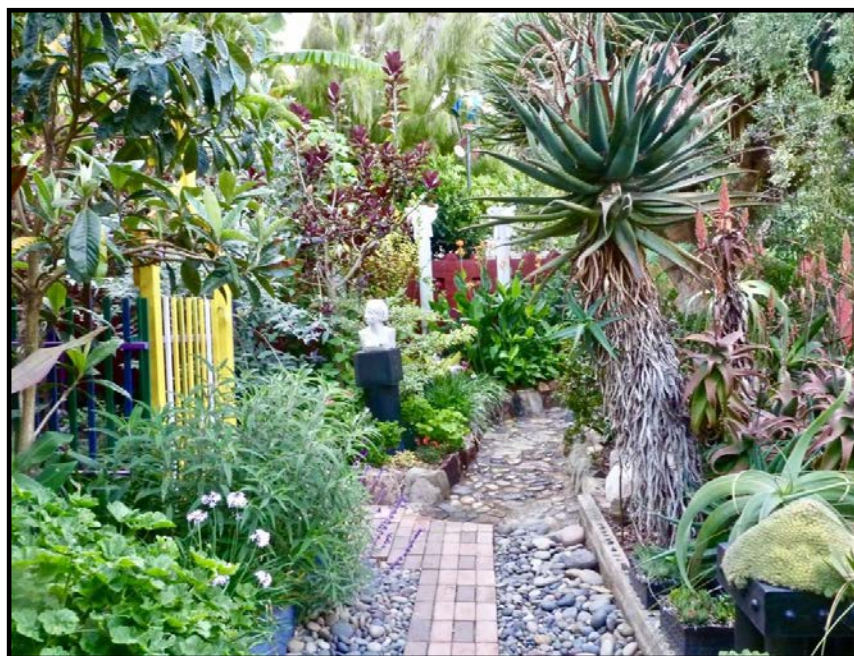
We have been invited for a special treat to visit and explore the garden of SDCSS members, artists Erik and Irina Gronborg. They moved to this house in 1976 and started what has become an award-winning garden, visited by groups, local and from throughout the country. There are decades old cacti, mature succulents, multiple other plant collections, a large old Chorisia tree Erik planted from seed - and so much more. Their garden is divided into a number of separate areas so that they could create their interpretation of the classical gardens they visited. It is their joint work of art, always changing. They love the plants but equally important are the painted walls, the pool with goldfish and water lilies, different pavements, wood trellises and furniture, and Erik's sculptures that all add bright color and texture throughout the garden.



Light refreshments will be offered.

The Garden was recently featured on Nan Sterman's TV Show, 'A Growing Passion – The Art of a Garden'. Here is a link to that segment, which only gives a taste of their amazing garden:

<http://agrowingpassion.com/episode-603-the-art-of-a-garden>





## Palomar Cactus & Succulent Society

The North San Diego County C & S Club!

### Membership Application

Membership: Please ☐ a category

New Member **OR** Renewal

Annual Dues w/color email newsletter \$20

Additional Household Members + \$ 5

Engraved PCSS Name Badge + \$ 6

Total \_\_\_\_\_

**PLEASE PRINT! We must be able to read it!**

Name(s) \_\_\_\_\_

Address \_\_\_\_\_

City/State \_\_\_\_\_ Zip \_\_\_\_\_

Phone # \_\_\_\_\_

Email \_\_\_\_\_

**MEMBERSHIP DIRECTORY** Please ☐ which, if any, we may include:

\_\_\_\_\_ Phone # \_\_\_\_\_ Email \_\_\_\_\_ City \_\_\_\_\_ OR \_\_\_\_\_ None

Forms available at meetings, just bring a check or cash to a meeting, or print one out and mail it in.

Make checks payable to PCSS.

Credit cards accepted at meetings.

**Palomar Cactus & Succulent Society or PCSS**

P.O. Box 840, Escondido, CA 92033

## Palomar Cactus & Succulent Society

### BOARD OF DIRECTORS

Peter Walkowiak – President

Brita Miller – Vice President, Meeting Set-up & Take Down, Show Chair, Event Coordinator, Volunteer Coord. Librarian,  
[eventcoordinator@palomarcactus.org](mailto:eventcoordinator@palomarcactus.org),

John Barkley – Treasurer

Annie Morgan – Secretary, Program Chair, Print Publicity,  
Website, Gift Plants, Business Cards, FB admin., Newsletter  
Editor (paid position)

Francis Granger – Board Member, Member/Guest Ambassador

Mike Nelson – Board Member, Brag Table Points

Jim Anderson – Board Member, Website, Online Publicity

\* \* \* \* \*

### OTHER VOLUNTEERS

Vicki Martin – Co-Librarian

Richard Miller – Membership

Kevin Smith – Brag Table Setup

Bruce Barry & Sandy Wetzel-Smith – Refreshments

Brian Magone – Exchange Table

Lorie Johansen – Guest/New Member Ambassador

Chet Reed – Brag Plant Photographer

Nell McChesney – Name Tag Drawing Plants

Meeting Set -up – Libbi Salvo

Cash Register at Monthly Meetings – Dennis Miller

### SOUTHERN CALIFORNIA EVENTS

July 19<sup>th</sup> – 21<sup>st</sup> - Orange County Cactus & Succulent Society Summer Show & Sale, Thurs., 6 - 9pm, Fri., 9 - 7pm, Sat., 9 - 5pm, 1000 S. State College Blvd., Anaheim United Methodist Church, Info: 949-212-8417

August 11<sup>th</sup> - 12<sup>th</sup> - 33<sup>rd</sup> Annual Intercity Show & Sale at the LA County Arboretum 9 - 5pm daily, 301 No. Baldwin Ave., Arcadia, Info: Tom Glavich 626-798-2430, John Martinez 805-390-2139

September 1<sup>st</sup> - Huntington Botanical Gardens Succulent Symposium – All day at the Huntington, Info: 626-405-3504

September 15<sup>th</sup> - Long Beach Cactus Club Annual Plant Auction, 12 - 5pm, Rancho Los Alamitos, 6400 Bixby Hill Rd., Long Beach, Info: 562-631-5876



**Brian Magone and Frances Granger, our dynamic duo who run the Exchange Table!**

## **2018 PCSS Meeting Schedule ~ Speaker & Topic ~ Plant of the Month**

July 28 <sup>th</sup>	-----	Paul Isley – 44 Years of Growing Tillandsias	- Tillandsias
August 25 <sup>th</sup>	-----	Annual Picnic & Auction	- Your Plants to be Auctioned!
September 22 <sup>nd</sup>	-----	Jon Rebman - TBA	- Monadenium
October 27-28 <sup>th</sup>	-----	Annual Show & Sale @ San Diego Botanic Gardens	- Your Show Plants!
November 17 <sup>th</sup>	-----	Woody Minnich - The New, Rare and Seldom Seen Cactus of Mexico	- Mammillarias - straight & hooked spines
December 15 <sup>th</sup>	-----	Holiday Party!!!	- Gift Plants Galore for You!